



**Autumn Glow Toad Lily\***  
*Tricyrtis formosana 'Autumn Glow'*

Height: 26 inches

Spread: 24 inches

Sunlight: ● ●

Hardiness Zone: 5a

Other Names: Toadlily

**Description:**

This selection forms an attractive mound of green leaves with glowing yellow-gold margins; orchid-like flowers with plum spotting and chartreuse centers; greatly appreciated close up; excellent as a cut flower

**Ornamental Features**

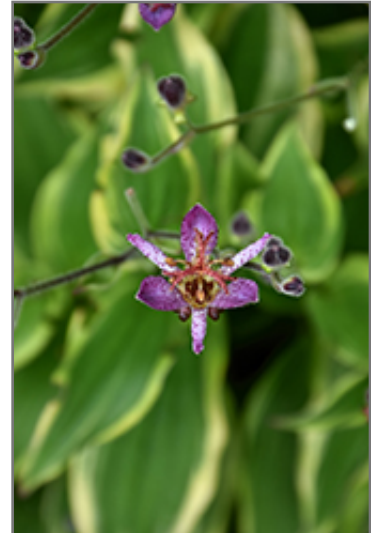
Autumn Glow Toad Lily has lilac purple orchid-like flowers with chartreuse overtones and plum purple spots at the ends of the stems from mid summer to early fall, which emerge from distinctive dark red flower buds, and which are interesting on close inspection. The flowers are excellent for cutting. Its attractive oval leaves remain green in colour with distinctive yellow edges throughout the season.

**Landscape Attributes**

Autumn Glow Toad Lily is an open herbaceous perennial with an upright spreading habit of growth. Its relatively fine texture sets it apart from other garden plants with less refined foliage.

This plant will require occasional maintenance and upkeep, and is best cleaned up in early spring before it resumes active growth for the season. Gardeners should be aware of the following characteristic(s) that may warrant special consideration;

- Spreading



*Autumn Glow Toad Lily flowers*  
 Photo courtesy of NetPS Plant Finder



*Autumn Glow Toad Lily in bloom*  
 Photo courtesy of NetPS Plant Finder



“WHERE GREAT IDEAS ARE GROWING”

Autumn Glow Toad Lily is recommended for the following landscape applications;

- Mass Planting
- General Garden Use
- Naturalizing And Woodland Gardens

### **Planting & Growing**

Autumn Glow Toad Lily will grow to be about 24 inches tall at maturity, with a spread of 24 inches. It grows at a medium rate, and under ideal conditions can be expected to live for approximately 15 years. As an herbaceous perennial, this plant will usually die back to the crown each winter, and will regrow from the base each spring. Be careful not to disturb the crown in late winter when it may not be readily seen!

This plant does best in partial shade to shade. It requires an evenly moist well-drained soil for optimal growth. It is particular about its soil conditions, with a strong preference for rich, acidic soils. It is somewhat tolerant of urban pollution, and will benefit from being planted in a relatively sheltered location. Consider applying a thick mulch around the root zone in both summer and winter to conserve soil moisture and protect it in exposed locations or colder microclimates. This is a selected variety of a species not originally from North America. It can be propagated by division; however, as a cultivated variety, be aware that it may be subject to certain restrictions or prohibitions on propagation.

*\* This is a 'special order' plant - contact store for details*